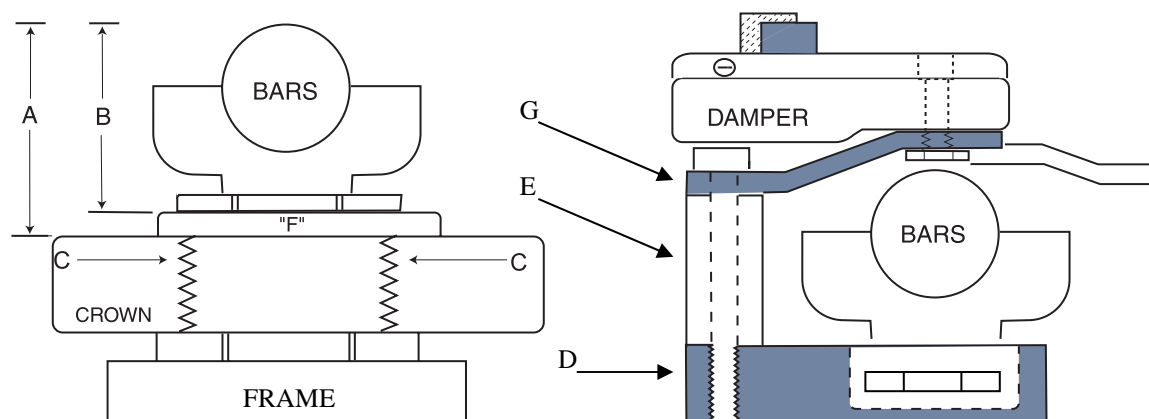




2625 Honolulu Ave • Montrose, CA 91020 • 818 248-6747 • Fax: 818 248-4529
 www.scottsonline.com • e-mail: sales@scottsonline.com



HOW TO ACQUIRE DIMENSIONS FOR FITMENT OF THE UNIVERSAL MOUNT KIT:

- 1) The goal is to have the damper mounted with the 15mm bottom nut on the damper as close to the bars as possible without hitting the bars. The following steps will show you how to do just that.
- 2) Most triple clamps have a small raised area "F" where the steering stem comes through the crown. Measure from this stepped area to the top of the handlebars "B", as shown in the illustration. If there is no raised area on the crown, measure from the flat surface of the triple clamp to the top of handlebars as shown above, marked "A".
- 3) If you're measuring a road bike that has no handlebars, then measure from the washer seating surface to the highest point on the steering stem nut or stem, whichever of the two is highest.
- 4) Remove the large nut holding the upper triple clamp tight and measure the outside diameter of the steering stem "C" (including threads) where it comes through the crown to determine the hole size needed for the base plate. Our base-plate "D" can accommodate 22, 24, 25, & 26 steering stems. Maximum stem size for a Uni-mount is 26mm. If there is a recess under the stem nut, a shim will be required to fill that void, as the base plate needs to sit on a flush surface, as you tighten the triple clamp nut. You must remove the main triple clamp nut and measure the OD of the stem with calipers or similar accuracy, as some stems taper near the top. Our base plate is made to fit precisely over the stem to prevent misalignment.
- 5) Is the triple clamp flat, raised or recessed where the main nut tightens against it? Specify which it is.
- 6) If it's recessed, we will need to know the exact depth of the recess so we can try to provide a shim to fill that space exactly. If the recess is not filled properly, the base plate "D" will be damaged when the main nut is tightened against it. (See photos for referencing).
- 7) To find the correct riser height "E", subtract 16mm from either your "A" or "B" measurement. You must use "B" if the crown has the raised area. Example if your "B" measurement is 50mm you would subtract 16 from 50 and your riser "E" would need to be 34mm.
- 8) Measure from the plane of the forward handlebar bolt holes, to the center of the steering stem. (see photo).
- 9) Measure the distance between the main handlebar and the crossbar.
- 10) Measure the distance from left to right of the bolts that hold the bars tight. Center to center as per photo.
- 11) Measure the Distance between the lower perches at the narrowest point.
- 12) Measure the distance between the front of the fuel tank and the head tube to determine frame bracket type.
- 13) Main nut size (which socket size will remove the main triple clamp nut).
- 14) Distance from the main nut/washer seating surface to the seam in the lower handlebar perch.

Universal kits "How to measure for" 02/09/10 UM-0

15) Is there a key switch? How far is this switch from the center line of the steering stem?

16) Pictures paint a thousand words when trying to build one of these kits. Provide pictures from directly above the mounting area and side, similar positions as the photos show on this sheet.

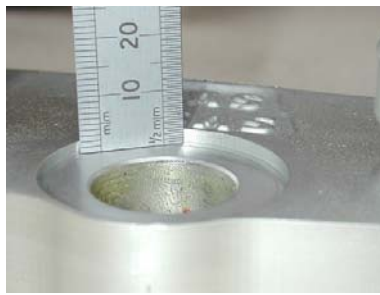
Installation of the **Universal** mounting hardware will vary from bike to bike depending on the configuration of your stock components. This is the general information required to attempt fitment. We provide instructional guidelines and photos with the final kit to help avoid installation hurdles but each application will require common sense and good mechanical skills in order to make the completed project correct. We've constructed these parts to adapt easily to a wide variety of applications. This is not a "specific fit" kit, that's why we call it "universal".

Depending on the configuration of the crown, i.e. dirt bikes, road bikes, quads, etc, it is possible that only one or two pieces of the Universal Barclamp would be required. Example: if the crown was flat on top with no bars, as with some road bikes, all you might need is the top plate, if it clears the main nut, or top plate and short risers to clear the nut. As long as the damper main shaft is over the steer tube you can use any combination or type of mount you want. Remember though, by using the base plate, it offers the added feature of aiding the user to center the damper over the steer tube.

References: All top plates "G" are 6.5mm thick (16mm total height) / All base plates "D" are 14mm thick



Measure the steering stem diameter



Measure the recess depth if any



Sample of raised area



Center to center , left to right



Center to center front to back



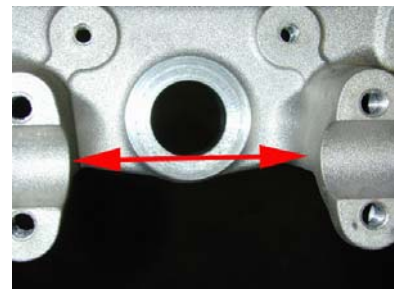
Plane of bolt holes to steer stem center



Between Crossbar and main handlebar



Top of bars to where nut-washer seats



Distance between lower perches



Distance between lower perches



What you're going to be mounting



Side view of universal kit