

## Ktm's 2000-07 all models (except 07 SX/SXF) Frame bracket mounting guidelines:

**IMPORTANT: Each Ktm varies with regard to the welds and position of the gusset. You must be sure the frame bracket is seated squarely and down far enough to clear the bearing seal. View the photos 1st.**

1. Block the front tire securely before removing the top triple clamp so the tire cannot move at all. See photos.
2. Support the rear tire also, just enough to keep tension on the front tire so the forks stay tight.
3. **Warning; once the triple clamp is loose, the forks can roll away from the bike AND it happens very quickly.**
4. Remove the pinch bolt under the main nut and then remove the top triple clamp, taking note of how tight the main nut is, so you can re-tighten it to the exact amount. **The main nut adjusts the tension on the steering head bearings.**
5. Remove the tin bearing shroud (cover) and rubber seal making note of how the seal goes on, (lips face downward).
6. Grease your bearings while you have them exposed. (Keep the grease off the area where our frame bracket mounts!!).
7. The goal is to allow the frame bracket to clamp cleanly and squarely around the upper half of the head tube.
8. Review your individual bike's welding characteristics at the head tube. You'll notice on the head tube there is a "groove" machined 360 degrees around the head tube. Everything in or above this groove must be clean of welds or slag. If this groove is visible all the way around and no welding slag has extended upward into or past this groove, then you're installation should be easy. Any welds extending into or above this groove must be filed away, but without changing the clamping area diameter. **DO NOT** file away the paint on the clamping area if possible. Spend a little more time filing carefully and your bracket will stay tight.
9. Each bike seems to have not only different welds, but slightly different gussets, so you'll have to evaluate your individual bike to determine the best fit. The bracket must clamp squarely and cleanly to the area just above that groove and yet SIT FLUSH all the way around the diameter of the head tube as per the photo in the lower right corner. Do not allow the bracket to protrude above the seal seating surface. Use a flashlight to see up under the bracket where it's hitting if it's not Flush. Occasionally, it hits on the gusset itself which can be tapped lightly with a hammer.
10. Once it's flush, align the frame bracket so the tower post is in the middle of the backbone of the frame and tighten the pinch bolt on the frame bracket to 6-8 ft lbs. Double check the flush position after tightening the pinch bolt.
11. Install your stock seal the same way it came off. Install the new shortened shroud (bearing cover), which is shorter than your stock tin shroud to allow clearance. Try to avoid having the shroud make contact with the frame bracket but be as close a possible.
12. Re-install the triple clamp carefully, as now is the time when the forks will want walk away from the bike.
13. Remember the main nut on your KTM adjusts the tension on your head bearing, so do not over tighten the nut. It should be seated just enough to take the play out of the bearing and then the pinch bolt tightened to hold it in place.
14. The shroud should pivot cleanly with the forks and have little or no contact with the frame bracket during turning.
15. Tighten the remaining triple clamp bolts and be sure the cables are routed as they were from the factory. Turn the bars full lock, left to right, and verify the cables are not pinched or in harms way.
16. Install the handle bar clamp so it matches the handlebar position you specified during ordering. Ktm's have 4 handlebar positions and the handle bar clamp provided fits only the position you ordered it for. See your owner's manual if you suspect something is mis-aligned. The manual explains how to verify this correct position.
17. Grease the tower pin and drop it in the tower. Keep it greased and free to float which insures proper alignment.
18. Install the stabilizer so the flats on the tower pin match the slot in the linkarm and tighten the 2 Allens for the damper.
19. Turn the bars slowly left to right and insure the cables are free and no binding is felt.
20. Adjust your steering stops so they bottom BEFORE the stabilizer does, or you can damage your stabilizer.
21. See your owner's manual for "How to" adjust the stabilizer initial settings.
22. If you have any questions, please feel free to call us.



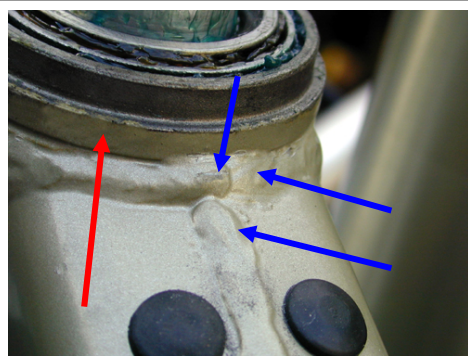
This needs very little filing at the weld



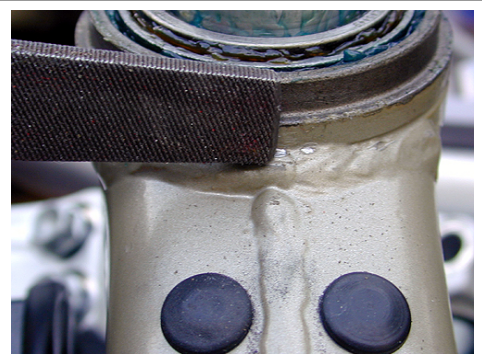
This will need a lot of filing at the weld



Block the front wheel & forks



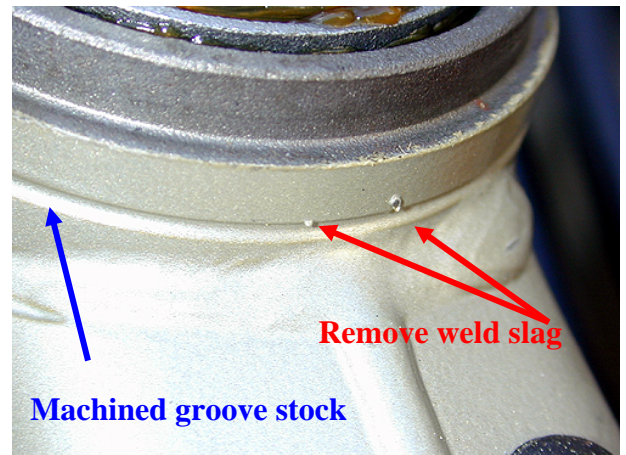
Red arrow shows clamping surface.  
Blue arrows shows where to file.



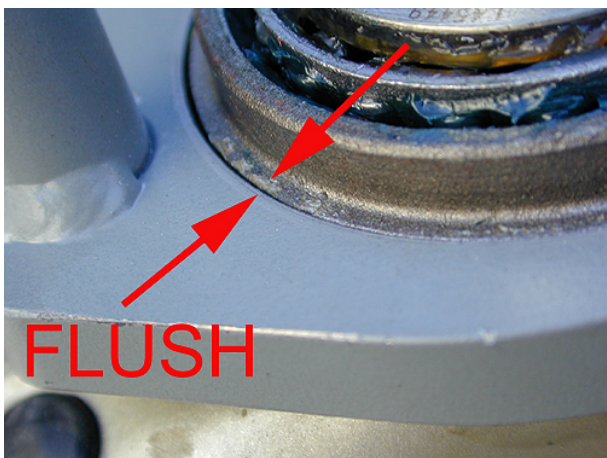
Using a sharp file, start at the high spots  
and trial fit the bracket until it fits.



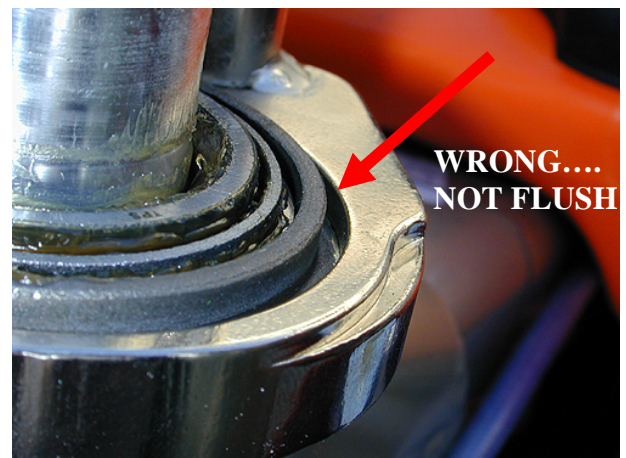
File the welds so the  
groove shows all the way



Remove weld slag  
Machined groove stock



FLUSH



WRONG...  
NOT FLUSH



Completed installation

