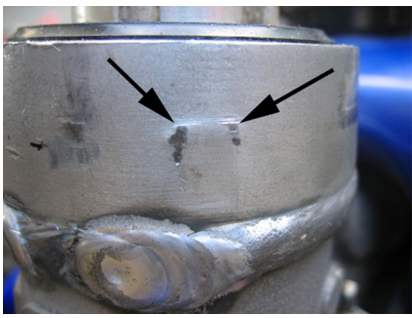


2625 Honolulu Ave · Montrose, CA 91020 · 818 248-6747 · Fax: 818 248-4529
www.scottsonline.com · e-mail: sales@scottsonline.com

Installation instructions for YZ250F 07-09 / YZ450F 2006-07 / WRF 2007-10

1. These instructions are for Stock Yamaha triple clamps or Scotts/BRP Triple clamps only. Many after market triple clamps will not work in co-ordination while using our frame bracket, due to space limitations. We've tried very hard to give as much clearance without sacrificing strength to accommodate **some** of the after market triple clamps. Each bike varies according to the combination of parts (triple clamps and lower perches) being used. We can only verify it will fit with stock or Scotts/BRP clamps.
2. Review the photos before starting, so you have an idea of what is being explained.
3. Remove the seat and fuel tank. **DO NOT TRY TO BEND or RESHAPE** the frame bracket, you'll ruin its precision fit.
4. Remove your number plate, upper bar clamps and top triple clamp by removing the main nut & upper triple clamp pinch bolts.
5. There are 2 casting bumps on the front side of the head tube. We've machined slots in the frame bracket for these bumps but if the casting "bumps" are unusually large on your head tube (see photos), you may have to file them down a bit to insure the frame bracket is biting onto as much round and smooth of surface as possible. You want the bracket to match as much of the head tube shape as possible, if you expect it to stay on tight.
6. Install the Scotts frame bracket by removing the pinch bolt and spreading the bracket **gently** with a large blade slot-head screwdriver. This bracket is intentionally tight, align it carefully, and then it will normally slide down perfectly and around your head tube. It must be started straight or it will feel as though it doesn't fit. You might have to spread it a bit to get the initial "drop on". It is an exact fit, so initial alignment is critical. The frame is cast aluminum and varies in size from bike to bike. Take your time and get the frame bracket on straight the first time.
7. The initial installation of the frame bracket is very important in order to retain a long life of your stabilizer kit. This frame bracket has several specifically machined angles to match the shape of the head tube. Keep it perpendicular as you initially install it.
8. Slide it on and tighten the front pinch bolt only a little, tap the bracket lightly with a mallet to insure it is seating **completely** down against the top of your head tube. Tap downward and tighten, tap again and tighten some more and examine that it's all the way down flush, all the way around. The 450F is a little harder to see when it's perfectly flush due to the chamfer around the Head tube. After the triple clamp is back on, sight the distance between the frame bracket and bottom of the triple clamp to try and verify that the frame bracket is all the way on and equal distant to the bottom of the triple clamp, insuring it's on straight.
9. The rear portion of the bracket has 2 small "engagement dimples" that intentionally hit the head tube and prevent it from getting flush. You must tap the bracket down, using a non metal mallot until the frame bracket is seated flush. The 2 small "engagement dimples" will be driven into your head tube to insure a tight secure fit. It is critical that you get it flush.
10. Slide the triple clamp back on temporarily, and turn the bars left to right to be sure you have the frame bracket centered.
11. After alignment, torque the frame bracket pinch bolt, in front, to 96-108 inch lbs. / 8-9 ft. lbs.
12. The "TAB" on the rear of the frame bracket is made to slide **underneath** your rubber tank mount.
13. **Once the front pinch bolt is tight**, if there is a gap between the tank bracket tab and the frame tank mount, use a washer/shim to fill the gap, see photo. We've provided a washer for what we found to be the "standard" gap, but each bike varies and some require more than others. Try to find a combination of washers/spacers that makes a perfect fit, as the tab itself, if being forced up or down when tightened, will try to remove the frame bracket from the head tube. If you have an unusually large gap, spend a little time making it fit right. Ideally, the tab should remain parallel with the top of the frame lug, where the tank bolts to.
14. Most bikes will not need any filing of any kind but if the slot in the frame bracket tab does not line up with your tank bracket hole for some reason, elongate the slot slightly. We given you enough slot to accommodate variations in the factory hole location, but it could vary enough to require this.
15. If the plastic tongue on the tank mount is too close to the frame bracket tab, you can file the tongue a little for clearance or even loosen the bolts on the under side of the tank and scoot the tab back a little.
16. Grease the floating tower pin and install into the tower, it is designed to float and should always remain greased.
17. The tower pin can be moved up or down by simply tapping on the pin to move the collar up or down. See photo height.
18. Install the upper barclamp and tighten the 4 bolts evenly so the gap between the mounting perches is equal. Install the stabilizer using the (2) 6x20 Allen bolts while aligning the tower pin into the slot in the linkarm. Remember your handlebar perches are reversible, the barclamp provided is for the position you ordered. If the slot in the linkarm does not line up with the tower pin, you may have to reverse your lower bar-perches 180 degrees. Refer to your Owners Manual for proper alignment.
19. Be sure all cables are routed properly and are not binding anywhere.

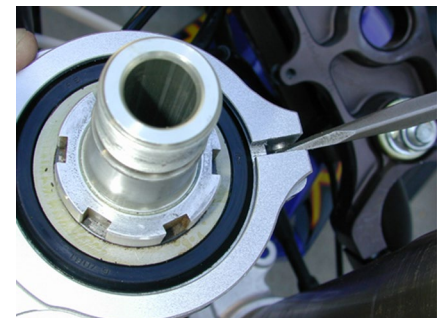
If you have any questions, please feel free to call us anytime, as we are here to help you.



Clean the head tube of casting bumps



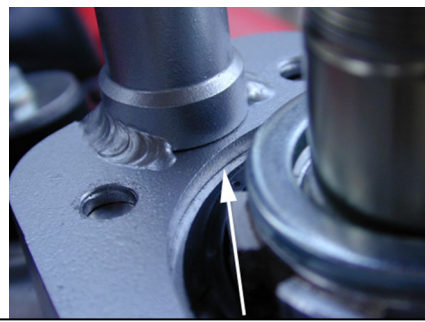
After bump is removed



Spread the frame bracket gently and slide it on in one clean motion.



Tap, then tighten, tap and tighten until the bracket is down and securely flush



Be sure the frame bracket is all the way down flush with the head tube, all the way around the entire surface.



Frame bracket installed with the tower aligned straight on the backbone.



Try to fill any gaps with a perfect fit washer

