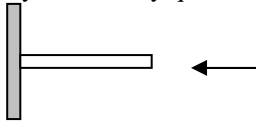
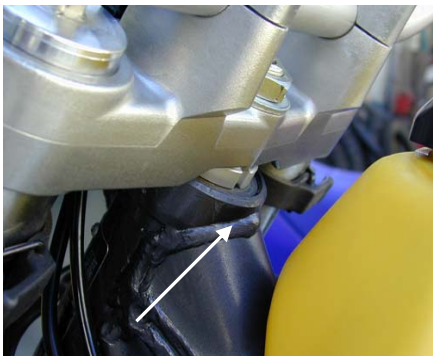
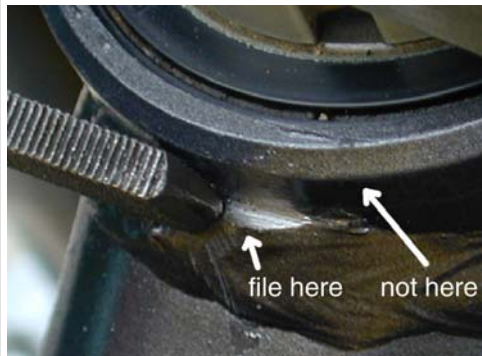


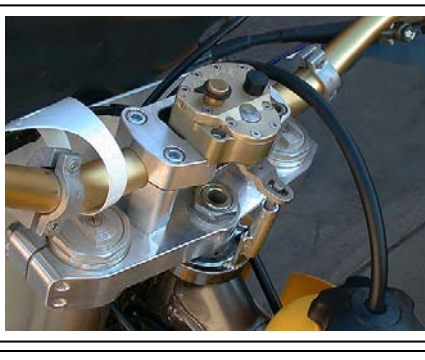



Suzuki RMX 250 1989-2000 installation guidelines:

1. Pictures may not be your exact model but depict the same requirements for proper mounting.
2. Refer to your Owners Manual for the general mounting guidelines and pitfalls during mounting.
3. Remove your front number plate, upper handlebar clamps and upper triple clamp.
4. Install the Scotts frame bracket around the head tube. It's important that it fit completely and securely all the way around the full diameter of the head tube. Most Suzuki frames require filing around the rear of the head tube, depending on who welded your frame that day at the factory. Where the backbone meets the head tube (lower right picture) the welds can occasionally be too high, which prevents the frame bracket to drop all the way on. Our frame bracket must drop down and bite enough of the head tube area if you expect it to stay on.. This filing should be done with a square edge file. Try not to change the diameter dimension of the head tube where our frame bracket will bite.
5. Align the frame bracket tower with the backbone of your frame so the frame bracket is straight and tighten to 6 ft lbs.
6. Re-install your triple clamp and torque the main nut to the factory specs. (Don't forget to tighten the fork pinch bolts).
7. Install the provided new lower handlebar perches using the stock bolts and hardware. Install the handlebars.
8. Install the Scotts one piece upper barclamp and tighten the (4) bolts evenly, the Scotts logo goes toward the front.
9. Install the stabilizer to the barclamp using the (2) 6x 20mm Allen bolts provided.
10. Install the tower pin using light grease, allowing it to float. See Owners manual for how to adjust the tower pin height.
11. If you have any questions please call us as 818 248-6747 or email at service@scottsonline.com.



This shape stone is OK for grinding the weld behind head tube but we recommend you use a file as shown.

		
Where you might need to file	Where to and not to file	Optional way to remove weld
		
Std diameter bars and stock triple clamp	This shows optional upper triple clamp and oversize bars installed.	Typical non-symmetrical welds that will need filing until the frame bracket sits flush against the head tube.